

EntraPass WebStation

KANTECH



User name:

Password:

[Forgot your password?](#)

Login

Powered by **KANTECH**

version 4.04

© Tyco International. All Rights Reserved.

Installation Manual

KANTECH

DN1864-1011

Table of Contents

General Information	1
Copyright Info	1
Technical Support	1
Overview	2
Introduction	2
Description	2
Concurrent Connections	2
Card Management	3
Definition	3
Users	3
Operations	3
WebViews	3
Reports	3
Session	3
Security	3
Multilingual	4
ResxEditor	4
Minimum Requirements	4
Web End User Computer	4
Windows Web Server with SmartLink and WebStation	4
EntraPass Server	4
EntraPass WebStation Documentation	4
Related Documentation	4
Task List	5
Optional Procedures	5
Registering the WebStation at the EntraPass Server	6
Adjusting the Connection Timeout during a WebStation Login	8
Installing or Updating the SmartLink and the EntraPass WebStation	8
Installing or Updating the SmartLink	8
Installing or Updating the EntraPass WebStation	9
Configuration of Internet Information Services 6 (IIS6)	14
Registering the SmartLink with the EntraPass Server	15
Configuring the SmartLink Email Server Parameters (optional)	16
Using the ResxEditor for Translation (optional)	16

General Information

Copyright Info

Copyright © 2010 Tyco International Ltd. and its Respective Companies. All Rights Reserved. All specifications were current as of publication date and are subject to change without notice. EntraPass, Kantech and the Kantech logo are trademarks of Tyco International Ltd. and its Respective Companies.

Technical Support

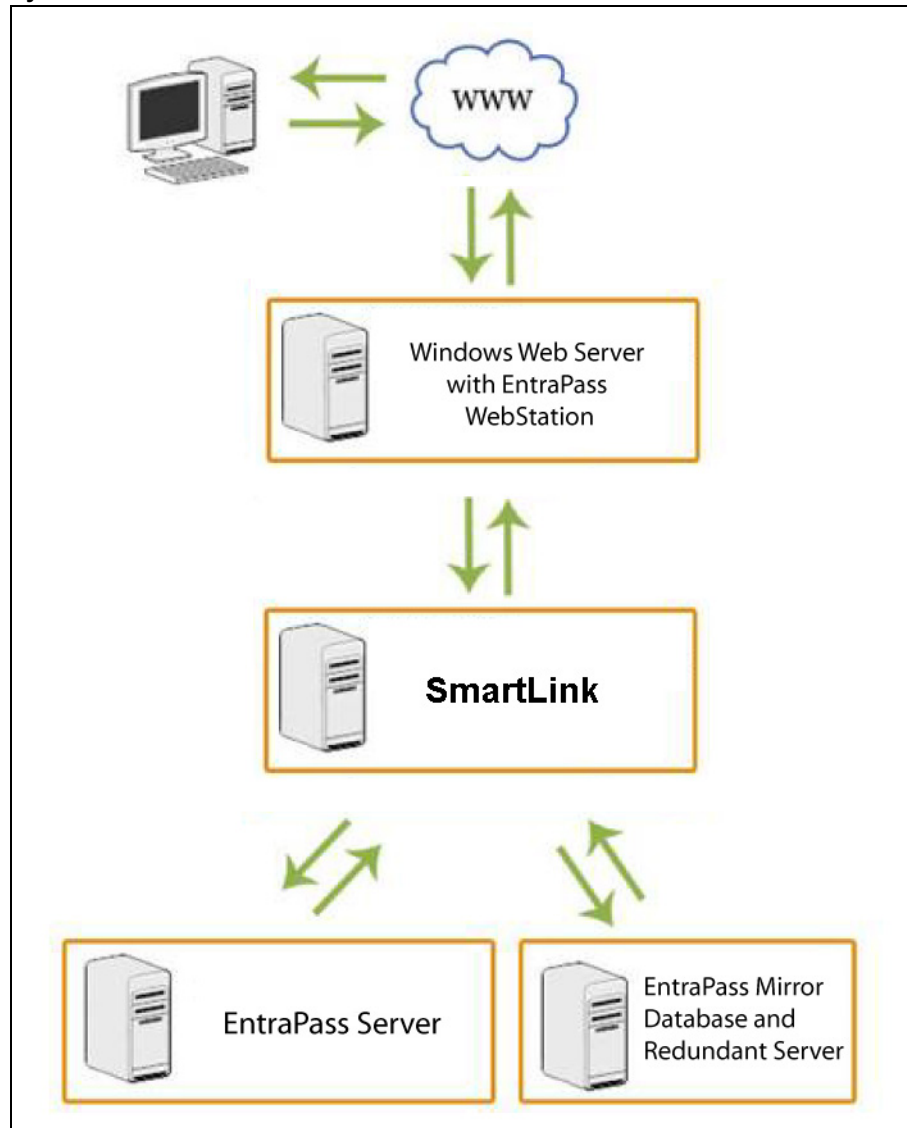
For technical assistance with the EntraPass WebStation and other Kantech products, contact technical support, Monday to Friday:

Country/Region	Phone Numbers	Hours	Email
North America Toll Free +888 222 1560 (GMT -05:00)			
US and Canada	Direct: +450 444 2030 Fax: +450 444 2029	8:00 to 20:00	kantechsupport@tycoint.com
Latin America (GMT -03:00)			
Argentina	Direct: +5411 4711 8711 Fax: +5411 4711 8201	9:00 to 18:00	ingenieria@tycoint.com
Asia (GMT +08:00)			
Asia-Pacific		8:30 to 18:00	TSP_SouthEastAsia@tycoint.com TSP_China@tycoint.com TSP_India@tycoint.com TSP_NorthAsia@tycoint.com TSP_ANZ@tycoint.com
Europe Toll Free +800 CALL TYCO / +800 2255 8926 (GMT +01:00)			
Bahrain	+800 04127	8:00 to 18:00	tfsemea.support@tycoint.com
France	+33 04 72 79 14 83		
Greece	+00 800 31 22 94 53		
Russia	+8 10 800 2052 1031		
Spain	+900 10 19 45		
Turkey	+00 800 31 92 30 07		
United Arab Emirates	+800 0 31 0 7123		
United Kingdom	+44 08701 ADT SUP / 44 08701 238 787 Direct: +31 475 352 722 Fax: +31 475 352 725		

Overview

Introduction

System Architecture



Description

The EntraPass WebStation is a simplified access to the EntraPass application that doesn't require the user to be located at the EntraPass workstation to perform various tasks.

When logging into the EntraPass WebStation, the end user will be able to see and perform card operations, modifying, searching cards and selecting available access profiles according to his access level. Operators can have access to manual operations such as elevator doors, doors, relays or inputs in order to perform tasks manually. Historical reports can be requested and received by email. Preconfigured Web pages (WebViews) can be viewed.

User rights determine which features are accessible. This is the same approach used with the EntraPass workstation user profiles. Functions, sites, cards, and other parts of the system are available to the operator when created by the system administrator.

Concurrent Connections

The EntraPass system allows simultaneous or concurrent EntraPass WebStation connections to the **same** EntraPass system. This should be planned in advance so when you are ready to install or update your system, you have all the required option certificates. Check the following table for details:

Table 1: Concurrent Connections

Part Number	Description	Maximum concurrent connections
EntraPass Corporate Edition		
E-COR-WEB-1	1 WebStation Connection	4
E-COR-WEB-3	3 WebStation Connections	
EntraPass Global Edition		
E-GLO-WEB-1	1 WebStation Connection	21
E-GLO-WEB-3	3 WebStation Connections	

Note: Web connection limitations vary depending on the installed Operating System.

Card Management

The **Card Management** page allows you to easily manage the EntraPass cardholder database remotely.

Here are the tasks that can be performed on the **Card Management** page:

- Assign up to five (5) card numbers per user name
- Assign card access groups
- Assign access levels
- Assign card types
- Define and issue cards without any card number
- Define and issue cards as well as perform card-related tasks (find, modify or delete existing cards)
- View card information in drop-down lists
- View card last transactions
- Import pictures into cards

Definition

- Schedules

Users

- Access Levels

Operations

- Door
- Elevator
- Input
- Relay

WebViews

- Display Web pages previously configured in EntraPass

Reports

- Historical report request (previously created in EntraPass) sent to a specific email address

Session

- Password change
- Password recovery

Security

Security between the EntraPass WebStation and the EntraPass Server will be handled in the same manner as any other connection.

Security at the EntraPass WebStation level is handled by the configuration of the Microsoft IIS Server. The administrator determines the usage and restrictions related to IIS encryption and/or SSL Certification.

Multilingual

The new EntraPass WebStation is available in two languages, English and French. The EntraPass WebStation detects and automatically uses the language preference of the web browser.

For example, to change or view the current language in Microsoft® Internet Explorer, go to the **Tools menu > Internet Options > General** tab, then click on the **Languages** button.

ResxEditor

This application helps you in the translation of the WebStation vocabulary into any language.

Important: The ResxEditor is a 3rd party software not supported by Kantech. Always create a backup of the files you are planning to translate. Translation of the EntraPass WebStation vocabulary should be performed only by system administrators.

Minimum Requirements

Web End User Computer

- Microsoft Internet Explorer 6.0 or higher, Mozilla Firefox 3.6, Google Chrome 6.0 or Safari 5.0.
- Screen resolution: 1024 x 768
- Adobe Flash Player 10.0 or higher
- Microsoft Silverlight 4.0 or higher

Windows Web Server with SmartLink and WebStation

- Operating systems: Windows XP Pro, Server 2003, Server 2008 (with SP2), Vista (with SP2) and version 7 32-bit (see **Note**)
- Latest Windows Service Packs and High Priority updates must be installed
- Processor: Pentium IV at 1.8GHz or better
- Minimum hard disk space: 10 GB
- RAM: minimum 1.0GB
- Microsoft Internet Information Services (IIS) version 5.0 or higher with the latest security updates
- Microsoft .NET Framework 4 SP1 with the latest security updates
- Hard disk space required for the EntraPass WebStation installation: 300 MB

Note: For Windows Vista and Windows 7, we highly recommend a dual core or higher processor with a minimum of 2 GB of RAM. Actual requirements may vary based on your operating system and configuration.

EntraPass Server

- EntraPass Corporate Edition or Global Edition v4.04 and higher.

EntraPass WebStation Documentation

The EntraPass WebStation documentation is divided in two manuals:

- One for the operations: EntraPass WebStation, *User Manual*, DN1709
- One for the installation: EntraPass WebStation, *Installation Manual*, DN1864

Related Documentation

- EntraPass Global Edition, *Reference Manual*, DN1316
- EntraPass Corporate Edition, *Reference Manual*, DN1415

Task List

Table 2 lists the procedures required for the installation of EntraPass WebStation.

Table 2: Task list for the EntraPass WebStation installation

Task	Page
1- Registering the WebStation at the EntraPass Server	6
2- Adjusting the Connection Timeout during a WebStation Login	8
3- Installing or Updating the SmartLink and the EntraPass WebStation	8
4- Registering the SmartLink with the EntraPass Server	15

Optional Procedures

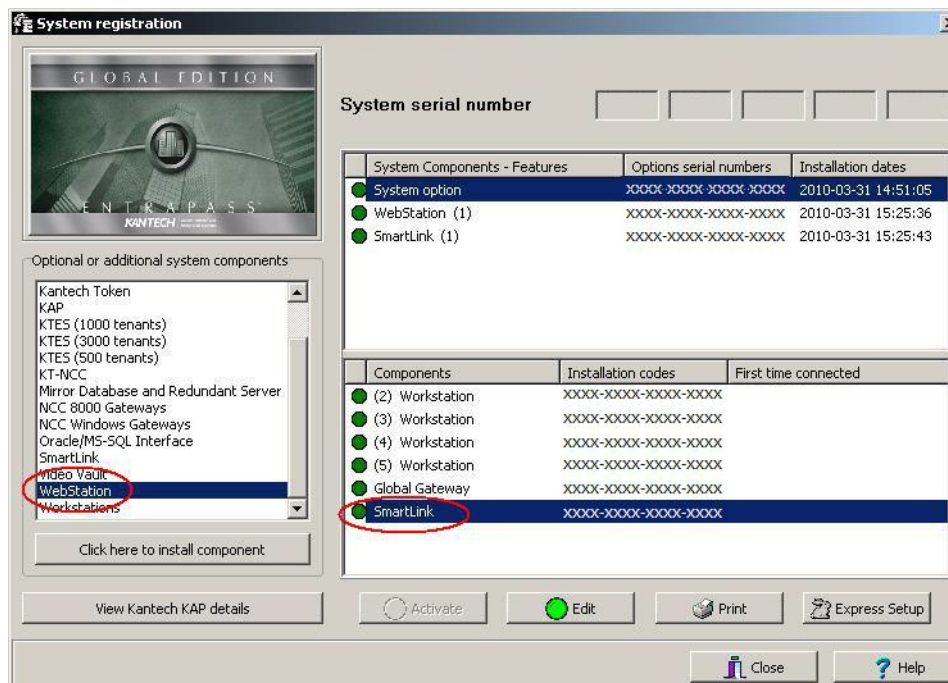
Table 3 lists the procedures that are not required for a typical installation but could be performed later if necessary.

Table 3: Optional Procedures

Task	Page
5- Configuring the SmartLink Email Server Parameters (optional)	16
6- Using the ResxEditor for Translation (optional)	16

1- Registering the WebStation at the EntraPass Server

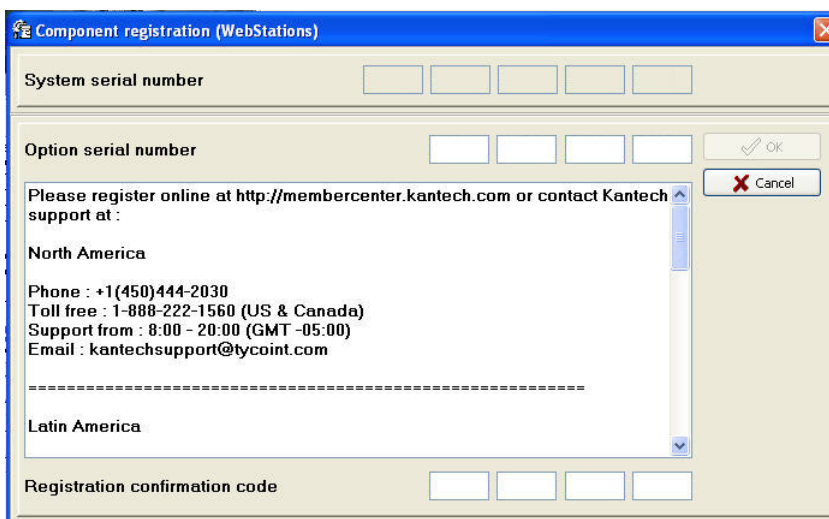
1. From the EntraPass Server, go to **Connection > System Registration**.



2. Take note of the **SmartLink** installation code. It will be required in **Procedure 3 on page 8** for the SmartLink installation.

Note: If there is no **Installation Code** listed for SmartLink, refer to the corresponding EntraPass Reference Manual.

3. Click on the **WebStation** component.
4. Click on the button: **Click here to install component**.



5. Enter the **Option Serial Number** (located on the Option Certificate) for 1 or more concurrent connections, see **Table-1 on page 3**. Register the new component to obtain the confirmation code. Click **OK**. An automated backup will be performed. Click **Close**.

Note: By registering an EntraPass WebStation, the Enhanced User Management functionality is automatically enabled.

Note: There are two ways of registering a new component; register online at www.kantech.com or contact your local Kantech technical support to get the registration confirmation code.

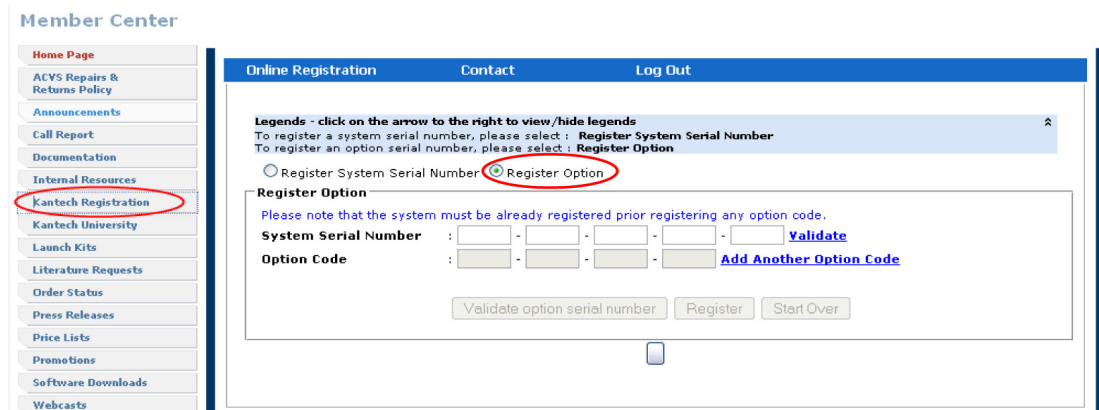
6. Go to **www.kantech.com** and click on the **Member Center**.



Note: If you are not a member yet, submit your request and your membership confirmation should be received by email within 1-2 business days.

Note: Please note that the first webstation license is free.

7. Click on **Kantech Registration > Register Option**.

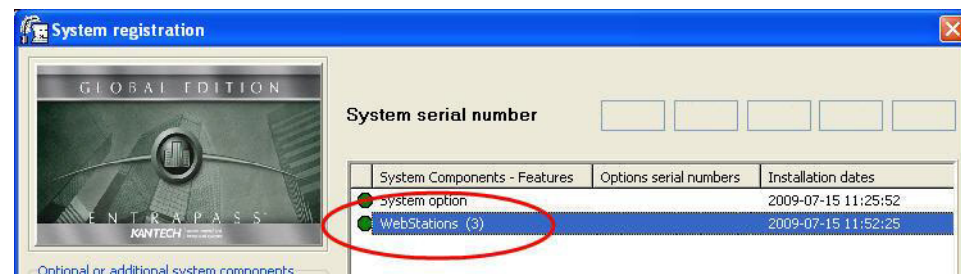


8. Enter the **System Serial Number** and follow the online instructions.

9. Return to the **EntraPass Component Registration** screen and enter the **Registration Confirmation Code**, then click **OK**. The **OK** button is only enabled when both codes are valid.

Note: An automated backup will be performed. Click **Close**.

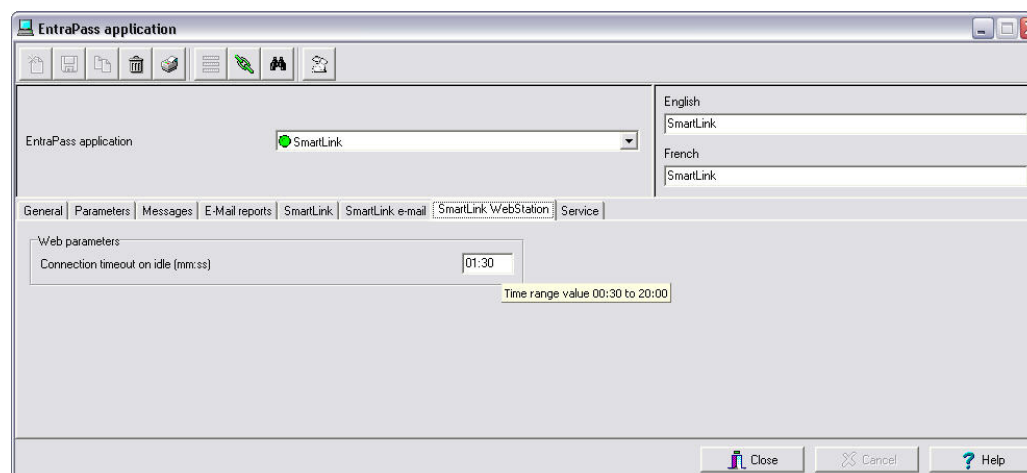
The maximum number of concurrent connections (logins) will be displayed in parentheses.



2- Adjusting the Connection Timeout during a WebStation Login

1. From the EntraPass workstation, go to **Devices > EntraPass Application**.
2. Select the SmartLink application and go to the **SmartLink WebStation** tab.

Note: The **SmartLink WebStation** tab will **only** be displayed if the **WebStation** system component has already been registered at the EntraPass Server, see **Procedure 1 on page 6**.



3. Choose the **Connection timeout on idle (mm:ss)** of the EntraPass WebStation. This is the amount of time that will be allowed when there is no entry at the WebStation. The time range value is between 00:30 to 20:00 minutes. When the connection timeout on idle has expired, the operator must log back in.

Note: All changes will be lost if the operator hasn't saved the data before leaving the WebStation idle.

4. Click on the floppy icon to save.
5. Click **Close**.

3- Installing or Updating the SmartLink and the EntraPass WebStation

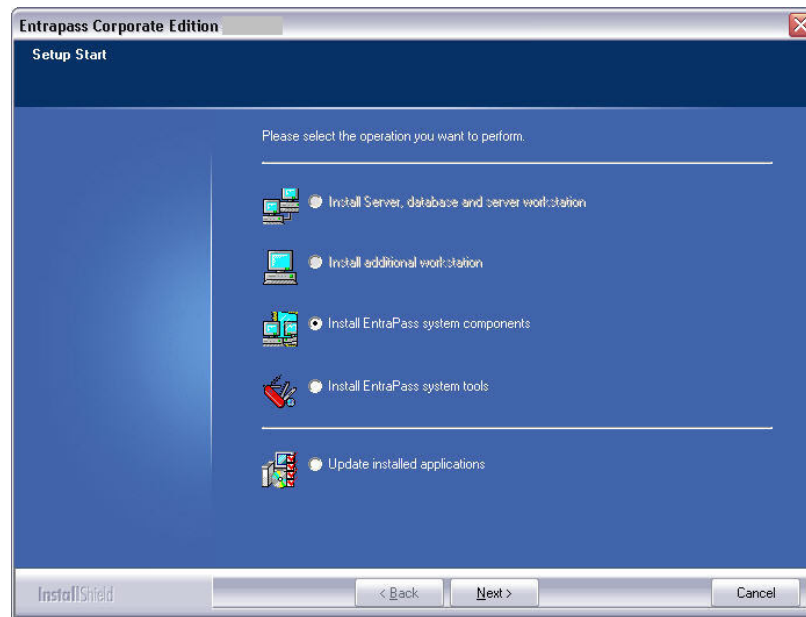
Installing or Updating the SmartLink

1. Quit all programs on the computer.
2. Insert the EntraPass CD-ROM in the CD drive. Double-click on the **Setup** icon.
3. The **Welcome** window is displayed. Click **Next**.
4. Choose the **setup language** and click **OK**.

Note: The **Choose Setup Language** will **not** be displayed if you are installing the SmartLink on a computer where EntraPass has previously been installed.



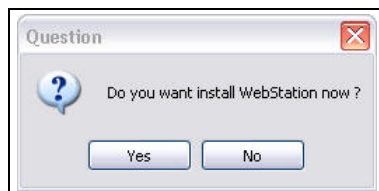
If you are	then go to
installing a new EntraPass v4.04 system	Step 5.
updating an existing EntraPass v4.0x system: <ul style="list-style-type: none"> • Select Update installed applications. Click Next twice. 	Step 12.



5. Select **Install Entrapass system components** option. Click **Next**.
6. Select **SmartLink** and click **Next**.
7. Enter the **SmartLink Installation code** from the **Entrapass Server System Registration** (refer to step 2. on page 6) and click **Next**.
8. Read carefully and accept the terms of the license agreement. Select **I agree** then click **Next**.
9. Enter your **customer information**. Click **Next**.
10. Click **Next**.
 - If you want to change the installation folder, click **Change**, choose the destination location, click **OK** and then click **Next**.
11. The **Ready to Install the Program** window is displayed. Click **Install**.

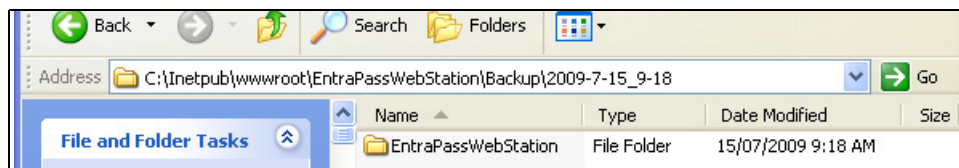
Installing or Updating the Entrapass WebStation

12. During the SmartLink installation process, a question dialog will be displayed.



13. Click **Yes** to start the installation of Entrapass WebStation.

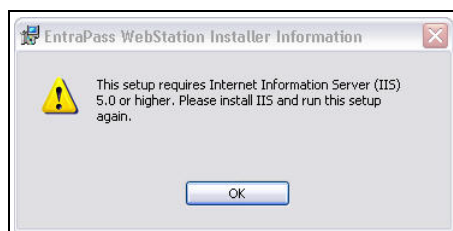
Important: If you are updating from WebStation v4.0x, the installer will automatically create a backup. The WebStation backup folder will be identified by the DATE and TIME the update was performed. The Entrapass WebStation backup folder will be located in the following directory:



Note: The Microsoft Internet Information Services (IIS) 5.0 or higher and .NET Framework 4 SP1 are required and should have been already installed. The installation program will detect if they are missing or below minimum requirements.

If you get	then go to
a warning message indicating that the Windows Web Server is either missing components or below minimum requirements	Step 14.
the Welcome to the InstallShield Wizard for the EntraPass WebStation window	Step 21.

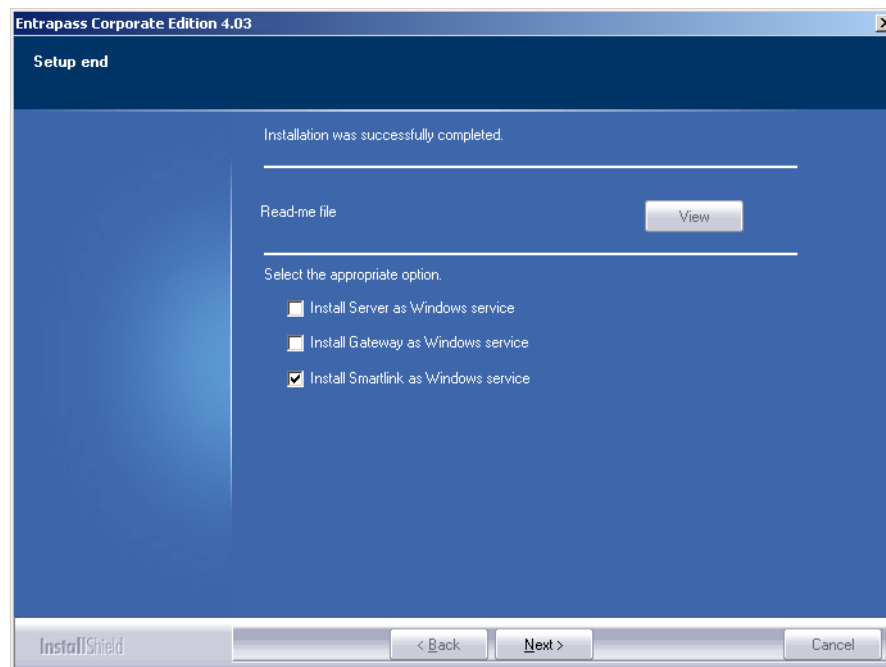
14. When the Microsoft Internet Information Services (IIS) 5.0 or higher is not installed, a warning message is displayed. Contact your network administrator for assistance.



Note: The Windows CD-ROM is required to install Microsoft Internet Information Services (IIS) 5.0 or higher.

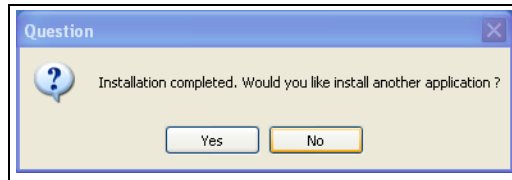
Note: Necessary third party software will be installed at this step.

15. Check the option: **Install SmartLink as Windows service.**



16. Click **Next** to complete the SmartLink installation.

17. You will be asked if you want to install another application. Click **No**.



18. At this step, you should be restarting the computer.

19. WCF (**Windows Communication Foundation**) must be activated. Refer to Microsoft documentation for details.

20. Repeat **Windows Update** until there are no more service packs and high priority updates to install concerning **.NET Framework 4 SP1**.

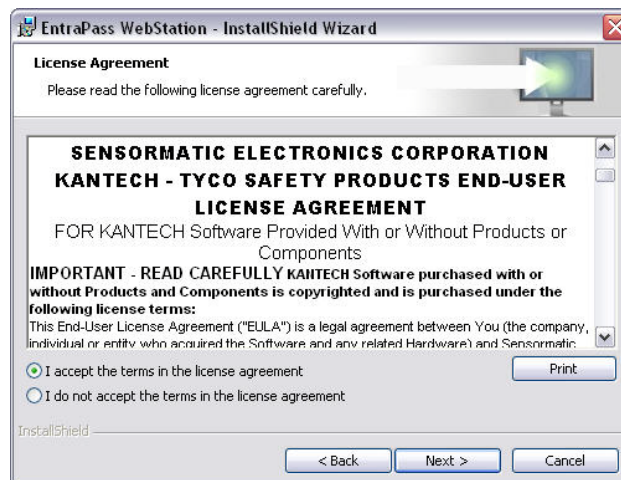
Warning: The installation of service packs and high priority updates could take up to 30 minutes.

21. Right-click on the EntraPass CD-ROM and select **Explore**. Double-click on **WebInstall.exe**.

Note: If the SmartLink is already installed on the computer, the EntraPass WebStation can also be installed by selecting **Update installed applications** in EntraPass Setup, see **Step 4**.



22. Click **Next** to start the installation.



23. Read carefully and select **I accept the terms in the license agreement**.

24. Click **Next**.

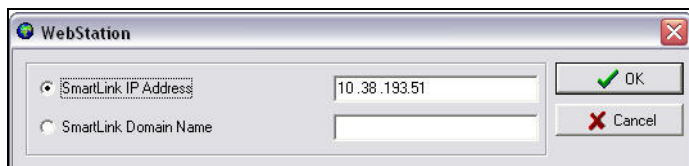
25. Click **Install** to start the installation.

26. A black command window saying **Start Installing ASP.NET** will be displayed and then closed automatically.

27. A diagnostic will be perform to verify that the installation went on perfectly. The table below draws a list of all the operations performed.

Actions	Description	Possible Causes of Failure
Setting Permissions	Ensure that the IIS User has the proper rights over the WebStation folder .	N/A
IIS Settings	Check for the IIS version	No IIS is installed on the server
IIS ASPNET Activation	Check for Directory Browsing feature of IIS. Applies to Vista, Windows Server 2008 and Windows 7	The Directory Browsing feature is not activated.
IIS Directory Browsing	Check for ASPNET feature of IIS. Applies to Vista, Windows Server 2008 and Windows 7	The ASPNET feature of IIS is not activated.
IIS Static Content	Check for Static Content feature of IIS. Applies to Vista, Windows Server 2008 and Windows 7	The Static Content feature of IIS is not activated.
WCF Service	Check HTTP and HTTPS WebStation WCF Service.	Some settings on IIS or on the network are not configured properly.
WCF HTTP Activation	Check for WCF HTTP Activation feature of IIS. Applies to Vista, Windows Server 2008 and Windows 7	The Windows Communication Foundation HTTP feature is not activated.

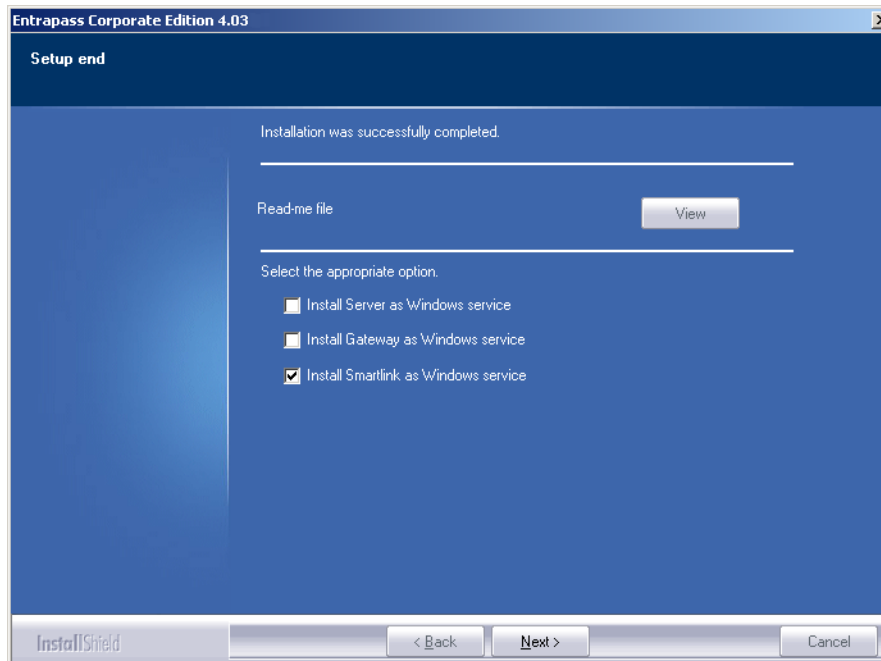
28. Enter the **SmartLink IP address** or the **SmartLink Domain name** of the computer where the SmartLink is running.



The image shows a Windows-style dialog box titled "WebStation". It has two radio button options: "SmartLink IP Address" (which is selected) and "SmartLink Domain Name". The "SmartLink IP Address" field contains the text "10.38.193.51". To the right of the fields are two buttons: "OK" with a green checkmark icon and "Cancel" with a red X icon.

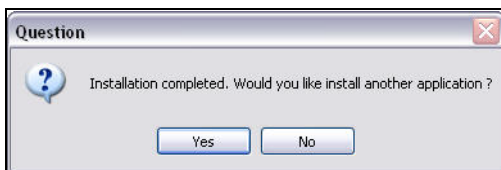
29. Click **OK**. Click **Finish**.

30. Check the option: **Install SmartLink as Windows service.**



31. Click **Next**.

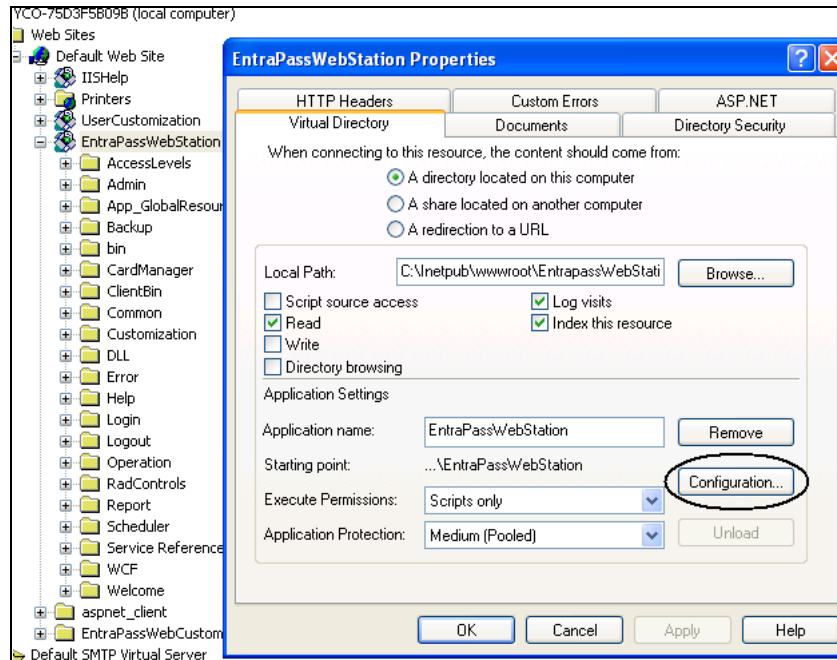
32. You will be asked if you want to install another application. Click **No**.



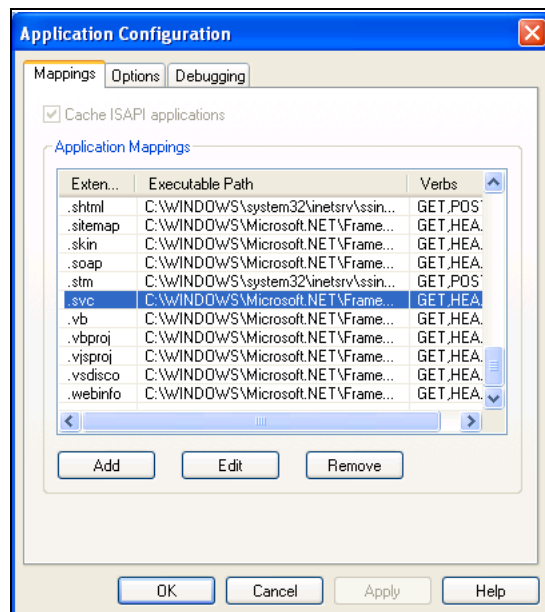
33. Restart the Windows Web Server.

Configuration of Internet Information Services 6 (IIS6)

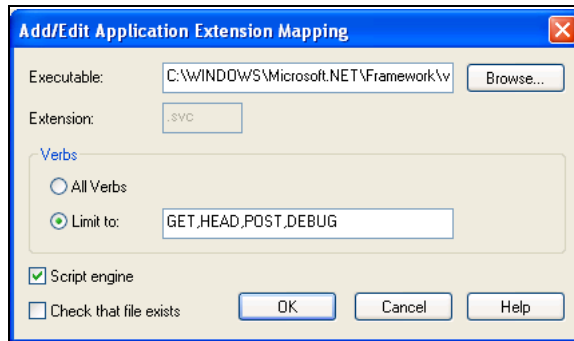
1. From the EntraPass site properties, click on the **Virtual Directory** tab and then on the **Configuration** button.



2. Make sure that the .svc extension is included.



If .svc is not among the extensions list, click on **Add** and enter the following data in **Executable** (C:\WINDOWS\Microsoft.NET\Framework\v2.0.50727\aspnet_isapi.dll) and **Limit to** fields:



4- Registering the SmartLink with the EntraPass Server

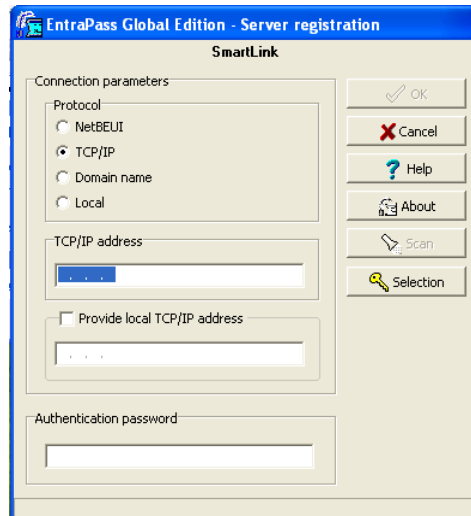
After an EntraPass application has been installed on a computer, communication with the EntraPass Server must be established between the two computers. The following steps will assist you in configuring and establishing the first communication between the SmartLink and the EntraPass Server using the proper protocol.

Note: Before you proceed, make sure that the EntraPass Server is online. Otherwise, launch it manually.

1. From the Windows® Start menu, click on **Start > All Programs > EntraPass Global Edition or Corporate Edition > SmartLink > SmartLink**. You can also start the **SmartLink** from the shortcut on the desktop.

Note: The system automatically launches the registration program when an application attempts to connect to the EntraPass Server before it has been registered. The **Server registration** window also appears when you launch an application before the EntraPass Server is online. When this happens, simply start the EntraPass Server.

Select the communication protocol to be used between the EntraPass Server and the SmartLink.



- **TCP/IP:** Enter the computer's TCP/IP address where the EntraPass Server is installed. The EntraPass Server's TCP/IP address appears in the EntraPass Server status bar.
- **Domain Name:** Enter the computer's name or the workgroup from which the EntraPass Server is a member.
- **Local:** Enter Local when registering a component on the same computer as the EntraPass Server. This option will take the address from the EntraPass Server.

2. Check the **Provide local TCP/IP address** button if the SmartLink connects to the EntraPass server using a VPN (Virtual Private Network) connection. Type the IP address used by the VPN application. This address is provided by the VPN application and is usually accessible by clicking on the minimized VPN icon found in the system tray.
3. Enter the **Authentication Password** and click **OK** (default is **Kantech**).

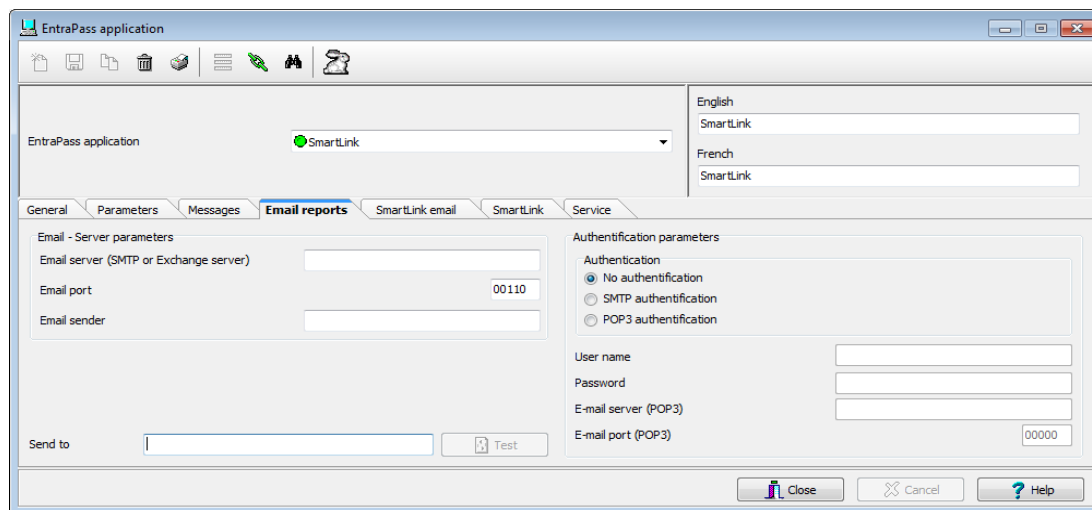


- If the server registration is successful, a confirmation is displayed.
 - If the server registration fails, a message is displayed. Contact your network administrator for assistance.
4. Click **Close**.

5- Configuring the SmartLink Email Server Parameters (optional)

This procedure is required when you want to receive historical report requests by email.

1. From the EntraPass workstation, go to **Devices > EntraPass Application**.

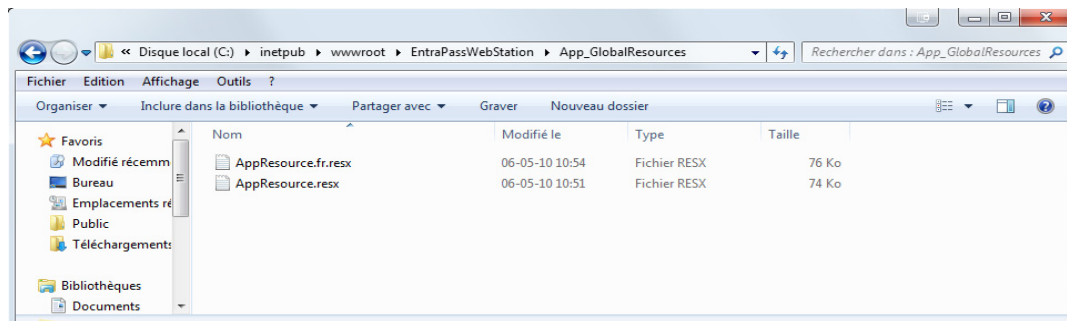


2. Select the SmartLink from the **EntraPass Application** list.
3. Click on the **Email reports** tab.
4. Enter the **Email Server Parameters**.
5. Click on **Save**.
6. Click on **Close**.

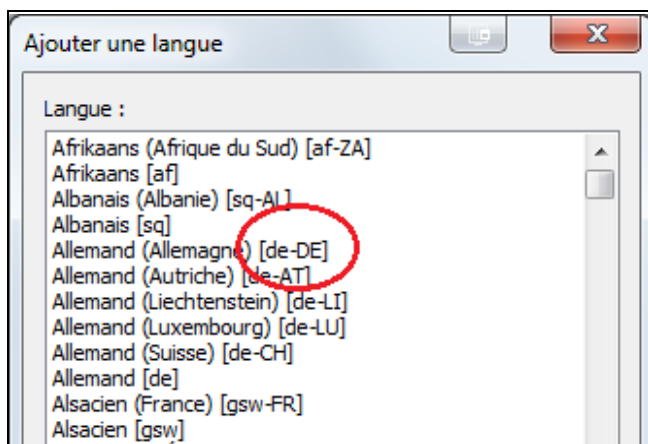
6- Using the ResxEditor for Translation (optional)

1. Make sure no EntraPass WebStation sessions are opened when you are ready to translate a language.

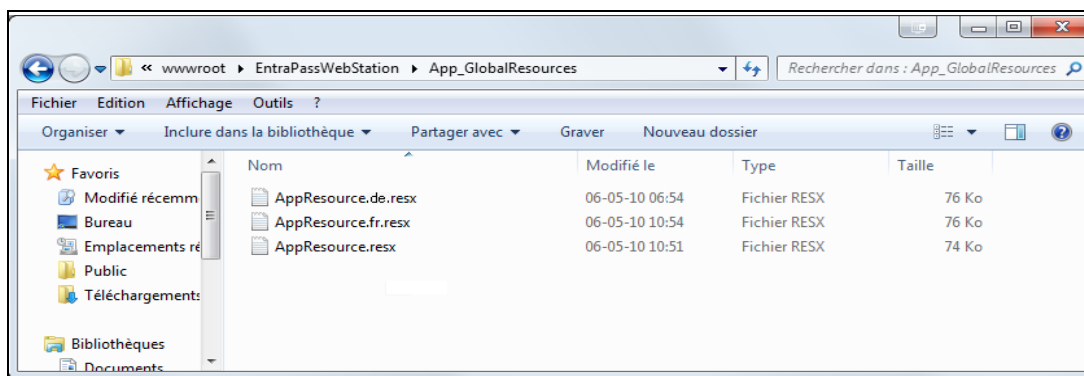
2. Go to the **App_GlobalResources** folder for the language files.



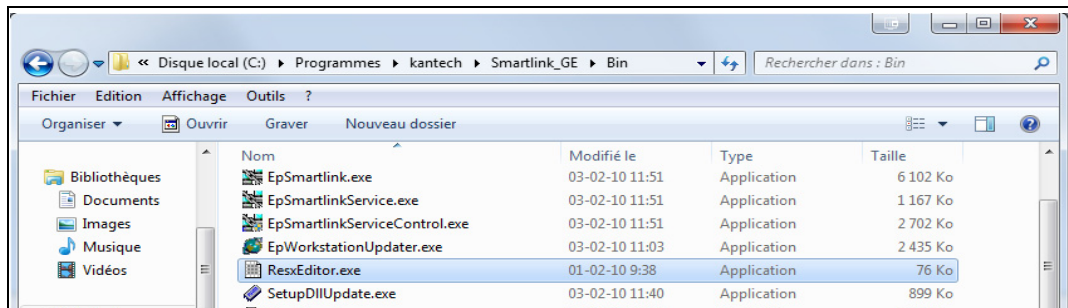
3. Select the *.resx file you want to use for translation:
 - **AppResource.fr.resx** for french, or
 - **AppResource.resx** for english
4. Duplicate the selected file and rename it as per the new language code. For example, you are using the english file to translate into german, the file **MUST** be named as followed in order to be recognized by the web browser:
 - AppResource.**de**.resx where **.de** is for german. Always use the **2-letter lower case** language code, not the next upper case letters used for another purpose. See below an example taken from Internet Explorer. For additional details, search for **ISO 639-1 Language Codes** on the Internet.



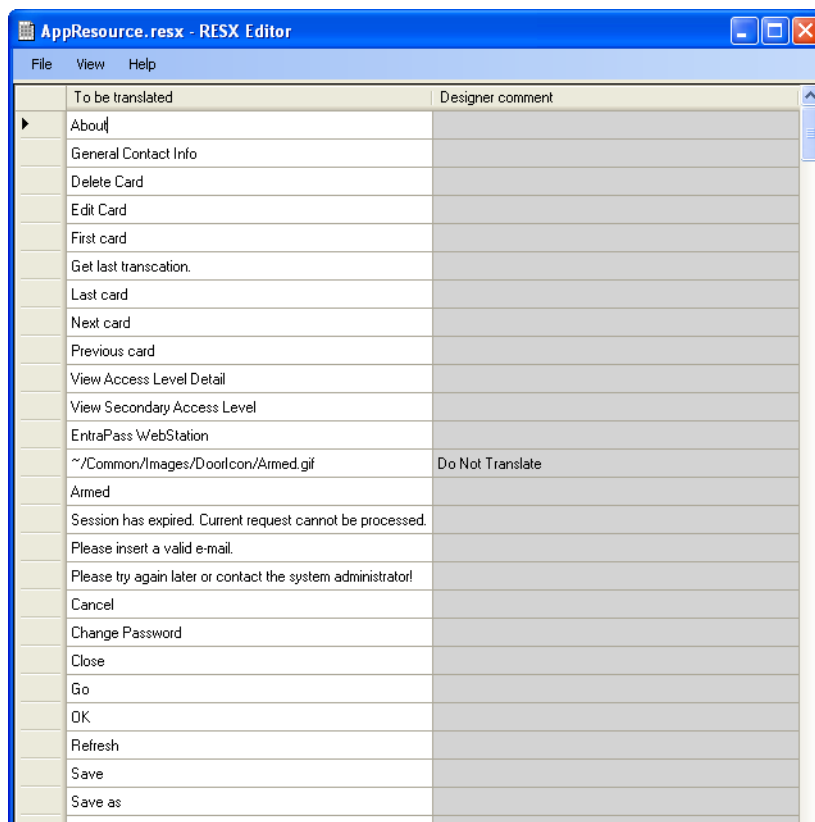
5. The **App_GlobalResources** folder should now appear like this.



- Go to the following folder for the **ResxEditor.exe** application.



- Double-click on the **ResxEditor.exe** and open the *.resx file created in Step 4.



- Double-click the cell to be translated.

Note: Be careful not to change designer comments such as **Do Not Translate**.

- Save the file.
- Change the language preference of the web browser accordingly.
- The modifications will take effect on the next EntraPass WebStation login.

KANTECH

Copyright © 2010 Tyco International Ltd. and its Respective Companies. All Rights Reserved.

www.kantech.com
DN1864-1011

